

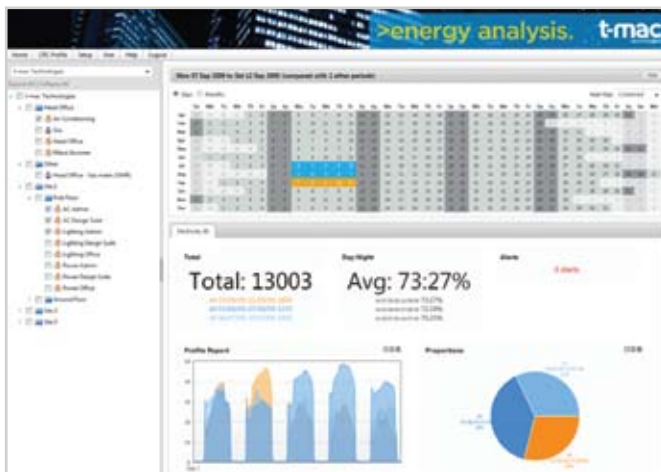
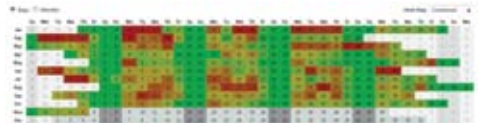
energy analysis new features

The **new home page** gives a comprehensive overview of the energy consumption. The date selection tool now includes a visual that allows multiple periods to be selected and compared. When multiple meters are selected, the charts overlay to easily show comparison for a specific date range. For multiple date ranges, the meters are aggregated for cross comparison.

Summary charts, (including profile and in/out of hours reports) show areas that may need further analysis; any alerts are clearly displayed.

The data can be viewed in the **raw units** (kWh, m3 etc) or converted into kg carbon, cost or other measures at the click of a button.

The date selector tool feature also has a built in **“heat map”** that colours days based on total consumption. The heat map enables in-hours, out-of-hours consumption, or combined consumption to be plotted.



+ Overview

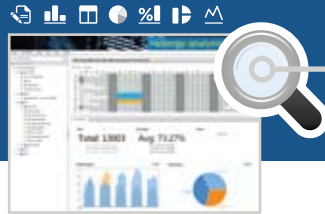
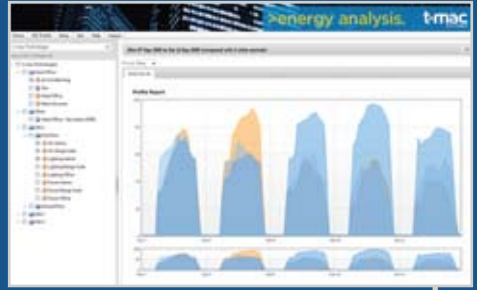
- Date selection
- Multi-period selector
- Meters cross compare

+ Summary Charts

- Profile
- In/Out of hours
- Raw units of data kWh, m3 etc
- Heat maps

Clicking on an area of the home page loads a more **detailed report**. The sample right shows a profile report expanded. The profile report features a new zoom tool, allowing the full sample to be shown when the larger chart is zoomed. The chart also allows date aggregation to be changed and various other options to be specified. The view can be changed between chart and tabular easily.

Business hours, alerts, dynamic profiles can all be overlaid on the chart at any time. Multiple date ranges can also be shown.



CRC reporting has been integrated

Carbon Reduction Commitment (CRC) Measurement Dashboard:

The CRC dashboard will provide businesses with a daily/weekly/monthly measure to enable them to view metering data from multi utilities. To see current consumption against purchased consumption and to assess instantly whether they will be under or over the carbon allowance by the end of the financial year.

The main aspect of the CRC dashboard is to ensure that businesses do not consume more than purchased, as this will result in penalties as part of the CRC legislation.

The CRC dashboard addition to the t-mac online software suite, should enable businesses to keep track of current consumption against that purchased and encourage them to 'act' upon deviations of consumption to ensure, at the end of the recording year, that they are below the amount purchased. **To find out more please contact t-mac Technologies Ltd**

t. +44 (0)1246 233632

www.t-mac.co.uk info@t-mac.co.uk



i New features summary

- Instantaneous Stats
- Savings demonstrator
- CO2 savings
- Targeting
- High consumption alerts
- KPI functionality
- Heat Map
- CRC
- Baseline Alert
- Regression Analysis

i Future versions

- League Tables
- Budgeting and Forecasting
- Calendar chart views